

Orientation for New Senators

August 28, 2008

Reitz Union Rm. 284

Frank Bova

Faculty Senate Chair

Today's Agenda

- Lunch!
- Welcome and Introductions
- President Bernie Machen
- Parliamentarian Barbara Wingo
- Senate Chair Frank Bova

University of Florida Constitution - Preamble

Believing that a society establishes institutions of higher learning, particularly universities, because such institutions serve the higher ends of that society;

Believing that a university serves these higher ends by being a beacon of learning, a fountainhead of dedicated and unselfish service, a focus for research and creative scholarship, a means for the transmittal and extension of old knowledge and the creating of new, a vehicle for that society's improvement by providing for that society the capacity for enlightened and responsible self-criticism which will prevent that society from losing its dynamic character and falling victim to intellectual and moral decay;

Believing that a university, like all complex human institutions, functions best to serve its assigned purposes under orderly processes of organization and government;

We, the Senate of the University of Florida, do hereby enact this Constitution.

Senate Functions

The Faculty Senate shall be the **legislative body** of the University, thereby providing a forum for mutual exchange of ideas between senior officers and faculty. In this capacity, the Senate shall take cognizance of, and may **legislate with respect to matters which concern more than one college, school, or other major academic unit, or which are otherwise of general university interest.**

Senate Membership

Faculty is defined in the bylaws

Senate members are elected proportionally according to the number of faculty in each college, for a total of 150 Senators

Policy Councils are comprised of Senators and elected by the Senate

Senate standing committee members are elected by the Senate from the faculty at large

Joint committee members are elected by the Senate and appointed by the President from the faculty at large

Liaisons to the Senate

President and Provost

Vice presidents of the University

Deans of academic units

Registrar

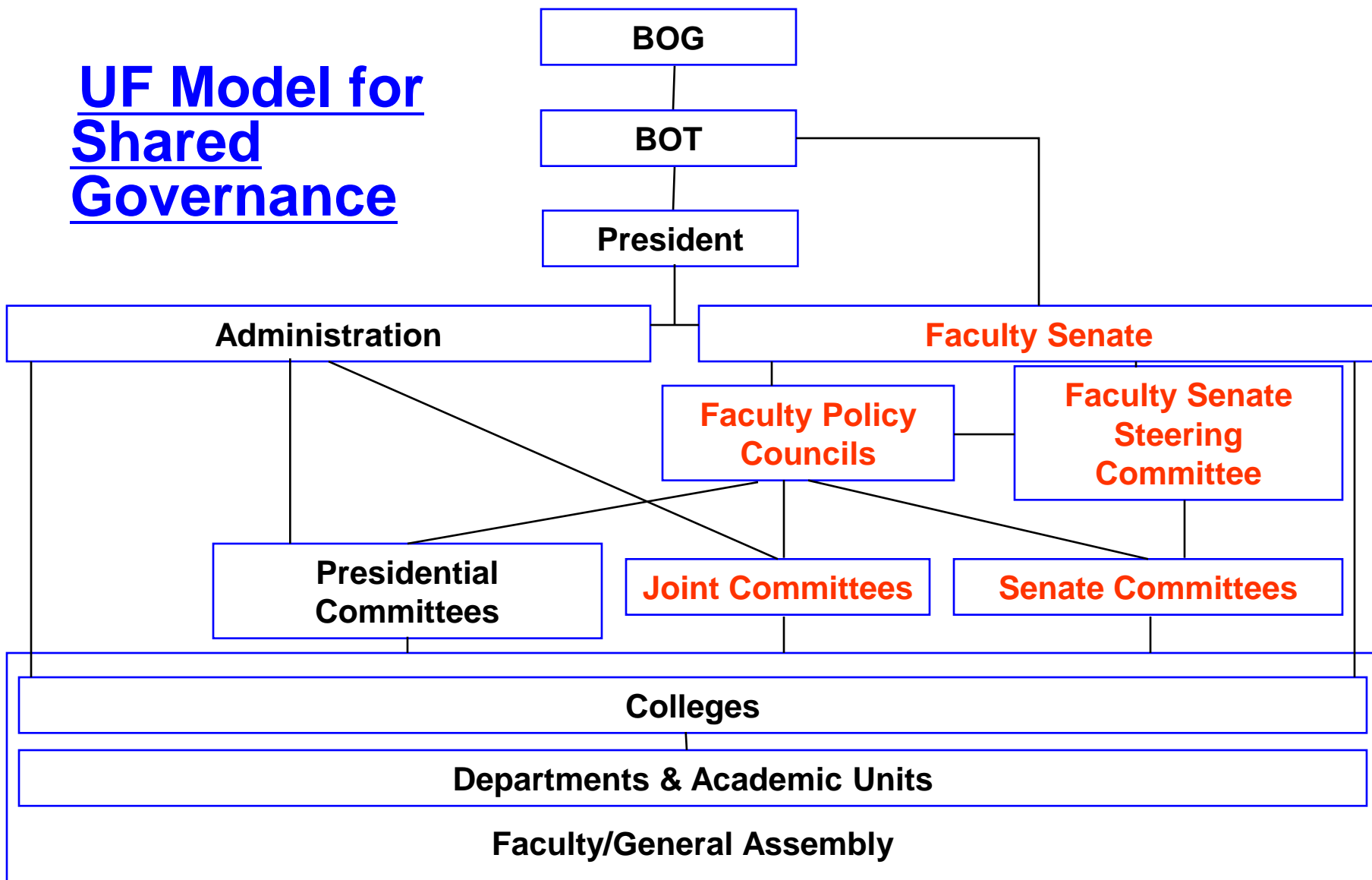
Members of the Senate Steering Committee and Chairpersons of other constitutionally specified committees and councils (if not elected members of the Senate)

Five students from SG

Three students from the Graduate School

One student from each college: Dentistry, Law, Medicine and Veterinary Medicine

UF Model for Shared Governance



Five Principles of Shared Governance

Mutuality, Collegiality and Collaboration

- Faculty and administration express support for responsibilities of one another
- Either faculty or administration can call meetings of unit
- Unit has a joint process for setting priorities for unit resources

Transparency

- Faculty and administration regularly report to one another.
- Unit has processes that establish open meeting requirements.
- Unit has readily available written guidelines and policies.

Representative Participation

- Faculty elect members and/or chairs for faculty committees.
- The unit has an elected body with elected leadership that represents faculty views.

Mutual Accountability

- Unit engages in regular evaluation of timeliness of responses to requests for information and consultation.
- Unit regularly assesses effectiveness of shared governance and makes modifications where necessary.

Clarity of Roles

- Unit has policy for areas of faculty and administration responsibilities for determination, recommendation, and consultation.
- Unit has due process rules for resolution of differences between faculty and administrators.

Indicators of Shared Governance (AAUP Website)

BOT and President verbally acknowledge the importance of shared governance

Faculty view participation in shared governance as a worthwhile faculty responsibility

Institution fosters SG by maintaining reasonable workloads & supporting service work

Faculty members can express dissenting views on governance without reprisal

Campus climate supports a diversity of ideas

Relationships b/w faculty, administrators, and governing board are cooperative

Communications are transparent and carried out in good faith

Given reasonable time, the faculty, administrators, and board respond expeditiously to requests from each other

Faculty committees determine educational policy, curriculum design, curriculum review, and standards for evaluating teaching and scholarship.

Faculty committees largely determine standards for hiring, retention and promotion of faculty

Faculty sets agendas, chooses representatives and leadership, and establishes procedures for committees that oversee those areas in which the faculty has primacy.

Faculty has an influential role in developing the institutional budget

The faculty has a strong influence on the selection and evaluation of academic administrators

Councils and Committees

Note: Elections in the Spring!

Your opportunity to get more involved!

Five Policy Councils

- Academic Infrastructure
- Academic Policy
- Budget
- Faculty Welfare
- Research and Scholarship

Council Charges and Responsibilities

The five Senate policy councils are charged with making policy recommendations and facilitating faculty participation in shared governance in their assigned areas.

The councils make recommendations to the Senate, facilitate the implementation of policy and serve as liaisons between the Senate and the administration within their areas. Each policy council oversees, coordinates and facilitates the work of committees assigned to their council. The councils have no authority to review decisions of any committee except that such decisions may be the basis for policy recommendations.

Academic Policy Council

- Admission and graduation requirements, majors, departments, colleges, other academic units, and other academic programs of study
- Evaluates any proposed changes in academic organization that are not contained within a single college
- Student life as it affects student academic performance

Faculty Welfare Council

- Academic criteria for appointment to the faculty and for promotion and tenure
- Academic merits of candidates for administrative positions of academic significance
- Faculty diversity
- Matters important to the quality of faculty life
- Academic freedom

Budget Council

- Formulates policy with respect to budget priorities involving academics and research
- Monitors past budget allocations
- Makes recommendations regarding long range allocations and costs of strategic plans

Research & Scholarship Council

- Appropriate policies and priorities to support the quality, stature, and relevance of the University's research initiatives
- Existing, expanded and new interdisciplinary research initiatives based on the expertise of the faculty
- Matters concerning graduate and undergraduate research experience

Academic Infrastructure Council

- Support matters that assist the faculty in fulfilling academic responsibilities
- Availability and retention of staff
- Need for the creation and alteration of academic buildings or the housing of libraries, laboratories and studios

Council/Committee Reporting Structure

Policy Council	Senate Committees	Joint Committees
Academic Policy	Honorary Degrees Committee	General Education Council University Curriculum Student Petitions
Faculty Welfare	Academic Freedom, Tenure, Professional Relations and Standards	Academic Personnel Board
Budget		
Research & Scholarship		Research Policy Committee Graduate Council
Academic Infrastructure	University Libraries	Land Use and Facilities Planning Lakes, Vegetation and Landscaping Parking and Transportation Preservation of Historic Buildings and Sites Sustainability Committee

Senate Standing Committees

- Senate Steering Committee *
- Committee on Committees *
- University Constitution Committee *
- Senate Nominating Committee *
- Academic Freedom, Tenure, Professional Relations and Standards Committee
- Honorary Degrees, Distinguished Alumnus Awards and Memorials Committee
- University Libraries Committee

* Operating Committees

Faculty Senate Steering Committee

Officers:

Frank Bova, Chair, COM
Jack Mecholsky, Chair elect, EG
Rick Yost, Past Chair, CLAS

Council Chairs:

David Quillen, COM- Budget
Jacob Chung, EG- Research
Jane Brockmann, CLAS-
Infrastructure
Sue Percival, CALS- Welfare
Danaya Wright, LW- Academic
Policy

Members at Large:

Elizabeth Bolton, CALS
Chris Snodgrass, CLAS
Ellis Greiner, CVM

Ex officio (non-voting):

Bernie Machen, President
Joe Glover, Provost
Barbara Wingo, Parliamentarian
Amelia Bell, Secretary

Joint Committees

- Academic Personnel Board
- Curriculum
- General Education Committee
- Graduate Council
- Lakes, Vegetation and Landscape,
- Land Use and Facilities Planning
- Parking and Transportation
- Preservation of Historic Buildings and Sites
- Research Policy Committee
- Student Petitions
- Sustainability Committee

Your Role as a New Senator

Take an active role

- Committee participation
- Attendance and participation
- Organize colleagues in academic unit

Communicate

- Early
- Openly
- Often
- www.senate.ufl.edu

Faculty Senate

University of Florida



Faculty Senate Annual Report 2007-2008

Approved Academic Policy Recommendations

March 2008

[Gordon Rule Proposal](#), *General Education Committee*

Approved Resolutions

November 2007

Student Conduct Code [Resolution](#)

January 2008

[Sustainability Resolution](#), *Sustainability Committee*

April 2008

[Sabbatical and Professional Development Leave Recommendations](#), *Research and Scholarship Council*

May 2008

[Resolution regarding faculty layoffs and restructuring](#)

[Faculty Authored Course Materials and Conflict of Interest Recommendations](#), *Academic Policy Council*

[Child Care Resolution](#), *Welfare Council*

Approved Constitution Changes

January 2008

[Changes to the Constitution](#)

Senate Annual Report 2007-2008

<http://www.senate.ufl.edu/SenateAnnualReport2007-2008.html>

February 2008

[Council membership language](#)

May 2008

[Preservation of Historic Buildings and Sites Committee Language](#)

Approved Committee on Committee Recommendations

May 2008

[University Curriculum Committee and General Education Council Chair Proposal](#)

Approved Curriculum Items

September 2007

[Elimination of BS in Engineering Science](#)

[LLM in Environmental & Land Use Law](#)

[Eliminate the graduate degrees in Engineering Mechanics and Engineering Science](#)

November 2007

[Department Name Change From Pharmacy Health Care Administration to Department of Pharmaceutical Outcomes and Policy](#)

[Change in name of the undergraduate major from the Decision and Information Sciences Department to Information Systems and Operations Management Department](#)

[School of Business Proposal for Creation](#)

College of Liberal Arts and Sciences Sunset degrees:

Master of Science in Teaching Psychology

Master of Arts in Teaching Psychology

Master of Arts in Teaching Geography

Master of Arts in Teaching Philosophy

Master of Arts in Teaching Political Science

Master of Arts in Teaching Linguistics

January 2008

[Change degree name from Turfgrass Science to Golf and Sports Turf Management](#)

March 2008

[Sunset Master of Health Science in Physical Therapy \(MHS\) Process Graduate Degree Program](#)

April 2008

[Sunset proposal: PhD and EdD in Student Personnel in Higher Education](#)

[Bachelor of Science in Sustainability and the Built Environment](#)

May 2008

[Master in Historic Preservation](#)

[People](#)

[Senators \(alpha\)](#), [Senators \(by unit\)](#), [Ex-Officio](#), [Officers](#)

[Senate](#)

[About Us](#), [Bylaws \(pdf\)](#), [Constitution \(pdf\)](#), [Senate Meetings](#)

[Committees](#)

[Steering](#), [Senate](#), [Joint](#), [Special](#), [Presidential](#)

[Councils](#)

[Budget](#), [Infrastructure](#), [Academic Policy](#), [Research](#), [Welfare](#)

[Calendar](#)

[Faculty Information](#)

[Accolades](#), [College Level Shared Governance](#), [Resources](#)

[Publications](#)

[Newsletters](#), [Reports](#)

Senate Site	<input type="text"/>
Search	<input type="button" value="Go"/>

[People](#) | [Senate](#) | [Committees](#) | [Councils](#) | [Faculty Info](#) | [Publications](#)
| [Text-only Version](#)